

## HD 4/11 C BP

Ideal for caretakers, in landscaping or for municipal tasks: our first battery powered professional high-pressure cleaner HD 4/11 C Battery. Works independently, without external power source.



Order no. **1.520-928.0**

- Independent high-pressure cleaning irrespective of external power sources
- High cleaning performance with long runtime
- Basic machine without batteries

### Technical data

<b>EAN code</b>		4054278355528
<b>Battery platform</b>		36 V battery platform
<b>Flow Rate</b>	<b>l/h</b>	320 - 400
<b>Water feed temperature</b>	<b>°C</b>	60
<b>Operating pressure</b>	<b>bar / MPa</b>	70 - 110 / 7 - 11
<b>Max. Pressure</b>	<b>bar / MPa</b>	150 / 15
<b>Power rating</b>	<b>kW</b>	1.6
<b>Water feed</b>		3/4"
<b>Number of batteries required</b>	<b>Piece(s)</b>	2
<b>Runtime per battery charging</b>	<b>min</b>	30 (7.5 Ah)
<b>Battery charging time with fast charger 80%/100%</b>	<b>min</b>	58 / 81
<b>Charging current</b>	<b>A</b>	6
<b>Power supply for battery charger</b>	<b>V / Hz</b>	100 - 240 / 50 - 60
<b>Battery charger cable length</b>	<b>m</b>	1.2
<b>Colour</b>		anthracite
<b>Weight (with accessories)</b>	<b>kg</b>	20.1
<b>Weight incl. packaging</b>	<b>kg</b>	23.9
<b>Dimensions (L × W × H)</b>	<b>mm</b>	380 × 370 × 930

### Equipment

<b>Variant</b>		Battery and charger not included
<b>Trigger gun</b>		EASY!Force
<b>High-pressure hose length</b>	<b>m</b>	10
<b>Spray lance</b>	<b>mm</b>	840
<b>Dirt Blaster spray lance</b>		■
<b>Pressure switch control</b>		■
<b>Water suction hose</b>		■

■ Included in delivery.



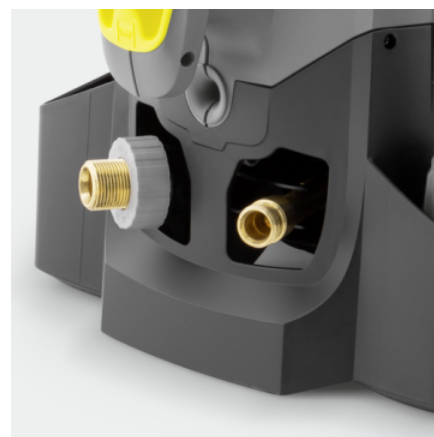
## 36 V battery platform

- High cleaning performance and long runtimes.
- Compatible batteries across several ranges.
- Time-saving quick charger.



## Economical and efficient eco:efficiency mode

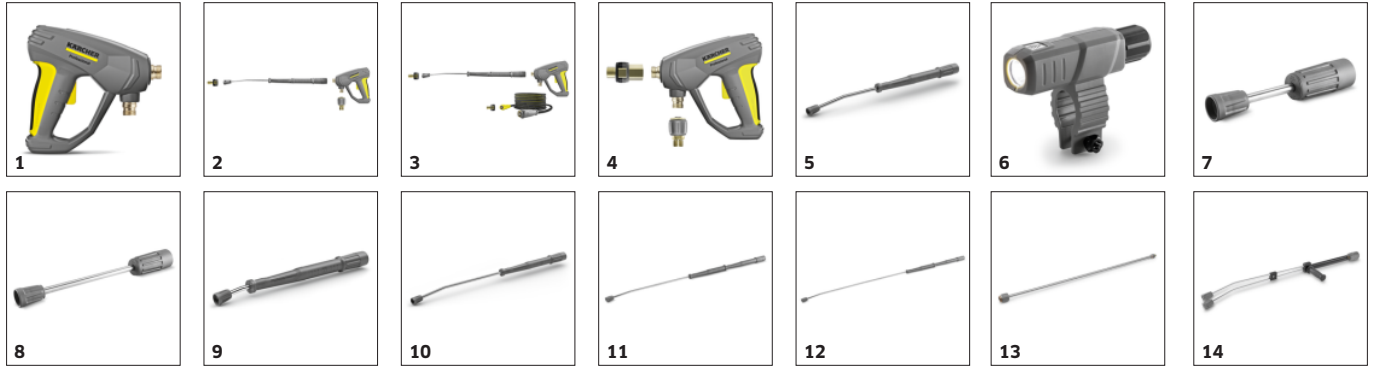
- Saves energy and extends the runtime of the battery.
- Reduced cleaning performance for lighter dirt.



## Quality

- The automatic pressure relief protects the components and extends the service life.
- High-quality brass cylinder head.
- Large, easily accessible water fine filter for protecting the pump against dirt particles in water.

## EQUIPMENT FOR HD 4/11 C BP 1.520-928.0



		Order no.	Description	
<b>TRIGGER GUNS</b>				
EASY!Force Advanced	1	4.118-005.0	Effortless, not energy-sapping: the EASY!Force high-pressure gun uses the recoil force of the high-pressure jet to reduce the holding force for the operator to zero.	■
EASY!Force conversion kit 1 - from high-pressure hose	2	4.111-050.0	For retrofitting Kärcher high-pressure cleaners with existing high-pressure hose: EASY!Force conversion kit 1 with EASY!Force high-pressure gun, spray lance and all adapters through to the nozzle.	□
EASY!Force conversion kit 2 - from machine	3	4.111-051.0	Developed for retrofitting existing high-pressure cleaners from Kärcher: EASY!Force conversion kit 2 with EASY!Force high-pressure gun, spray lance, high-pressure hose and necessary adapters.	□
EASY!Force conversion kit 3 - high-pressure gun	4	4.111-052.0	Compatible with existing high-pressure hose and spray lance: EASY!Force conversion kit 3, incl. EASY!Force trigger gun and all necessary adapters for upgrading your high-pressure cleaner.	□
<b>SPRAY LANCES</b>				
<b>Rotating spray lances</b>				
Spray lance, 840 mm, rotatable	5	4.112-006.0	850 mm stainless steel lance (manual coupling) with ergonomic handle for ease of use and protection. Rotatable 360° under pressure.	■
LED nozzle light	6	2.680-002.0	Bright, lightweight LED work light for direct mounting on spray lance of EASY!Force high-pressure gun. Better view in unfavourable lighting conditions for up to 5 working hours.	□
Spray lance, 250 mm, rotatable	7	4.112-027.0	Spray lance, 250 mm, rotatable, ergonomic	□
Spray lance, 400 mm, rotatable	8	4.112-024.0	Spray lance, 400 mm, rotatable, ergonomic	□
Spray lance, 600 mm, rotatable	9	4.112-007.0	600 mm stainless steel lance (manual coupling) with ergonomic handle for ease of use and protection. Rotatable 360° under pressure.	□
Spray lance, 1050 mm, rotatable	10	4.112-000.0	1050 mm stainless steel lance (manual coupling) with ergonomic handle for ease of use and protection. Rotatable 360° under pressure.	□
Spray lance, 1550 mm, rotatable	11	4.112-018.0	1550 mm stainless steel lance (manual coupling) with ergonomic handle for ease of use and protection. Rotatable 360° under pressure.	□
Spray lance, 2050 mm, rotatable	12	4.112-021.0	2050 mm stainless steel lance (manual coupling) with ergonomic handle for ease of use and protection. Rotatable 360° under pressure.	□
Spray lance extender, 1000 mm	13	4.112-048.0	Spray lance extension with EASY!Lock connection. Length 1000 mm.	□
<b>Double lance</b>				
Double lance, 960 mm	14	2.112-016.0	960 mm double lance for variable pressure adjustment on handle at full water flow rate. Suitable for agricultural use ( e.g. stable cleaning).	□

■ Included in delivery. □ Available accessories.

## EQUIPMENT FOR HD 4/11 C BP 1.520-928.0



		Order no.	Description	
<b>SPRAY LANCES</b>				
<b>Angular spray lance</b>				
WC and gutter lance	15	4.112-029.0	Stainless steel lance WC and gutter with nozzle insert. Specially shaped for effective and hygienic cleaning of gutters and toilets.	<input type="checkbox"/>
<b>Flexible spray lance</b>				
Flexible lance, 1050 mm	16	4.112-035.0	1050 mm flexible lance with variable bend from 20° to 140°, ideal for cleaning difficult to reach areas, e.g. gutters.	<input type="checkbox"/>
High pressure articulated joint	17	4.112-057.0	For hard-to-reach areas: High-pressure articulated joint with infinite angle adjustment up to 120°. Simply attach directly to the spray lance of the pressure washer.	<input type="checkbox"/>
<b>Gutter cleaner</b>				
Gutter cleaning lance	18	2.112-015.0	The lance is suited for cleaning of gutter systems. Because of the shape of the lance and the special nozzle the gutter can be cleaned without removing the cover plates.	<input type="checkbox"/>
<b>Undercarriage spray lance</b>				
Underbody lance	19	4.112-032.0	Stainless steel lance for effective and easy underbody and wheel arch cleaning. Without high-pressure nozzle.	<input type="checkbox"/>
<b>Additional handle</b>				
Additional handle for EASY!Lock spray lances	20	4.321-380.0	Comfortable in every situation – the additional handle is easy to attach to the spray lance of our new EASY!Lock generation and makes work easier by allowing you to adjust your posture to suit the particular task.	<input type="checkbox"/>
<b>PowerControl spray lance</b>				
PowerControl spray lance 027	21	4.112-043.0	The PowerControl spray lance with nozzle size 027 allows infinitely variable adjustment of the pressure directly in the gripping area and thus an exact adaptation of the power to the respective task.	<input type="checkbox"/>
<b>ROTARY NOZZLES (DIRT BLASTERS)</b>				
<b>Dirt Blaster, small</b>				
Dirt blaster, small, 028	22	4.114-056.0		<input checked="" type="checkbox"/>
<b>MULTIPLE-JET NOZZLES</b>				
<b>Triple nozzles</b>				
Triple nozzle, 028	23	4.117-024.0	Triple nozzle with manual nozzle changeover. Convenient spray adjustment. For machines with an injector, the low-pressure flat stream is useful for cleaning agent suction and application.	<input checked="" type="checkbox"/>
<b>HIGH-PRESSURE HOSES</b>				
<b>Standard with unions on both sides</b>				
High-pressure hose, 10 m, ID 6, 250 bar, 2 × EASY!Lock	24	6.110-034.0	10 m high-pressure hose (M 22 × 1.5) with kink protection. With patented rotating AVS trigger gun connector and manual coupling. Further data: DN 6/155°C/250 bar.	<input checked="" type="checkbox"/>
High-pressure hose, 10 m, ID 10, 220 bar, 2 × EASY!Lock	25	6.110-041.0		<input type="checkbox"/>
High-pressure hose, 10 m, ID 6, 250 bar, 2 × EASY!Lock	26	6.110-035.0	10 m high-pressure hose (M 22 × 1.5) with kink protection. With patented rotating AVS trigger gun connector and manual coupling. Further data: DN 6/155°C/250 bar.	<input type="checkbox"/>
High-pressure hose, 10 m, ID 6, 300 bar, 2 × EASY!Lock	27	6.110-056.0	With patented AVS connection in the trigger gun (pivot-mounted) and hand screw union. M 22 × 1.5 with anti-kink protection. NW 6/155°C/300 bar	<input type="checkbox"/>
High-pressure hose, 10 m, ID 8, 315 bar, 2 × EASY!Lock	28	6.110-031.0	10 m high-pressure hose (M 22 × 1.5) with kink protection. With patented rotating TR22 trigger gun connector and manual coupling. Further data: DN 8/155°C/315 bar.	<input type="checkbox"/>

■ Included in delivery. □ Available accessories.

## EQUIPMENT FOR HD 4/11 C BP

### 1.520-928.0



		Order no.	Description	
HIGH-PRESSURE HOSES				
Standard with unions on both sides				
High-pressure hose, 15 m, ID 8, 315 bar, 2 × EASY!Lock	29	6.110-030.0	15 m high-pressure hose (M 22 × 1.5) with kink protection. With patented rotating AVS trigger gun connector and manual coupling. Further data: DN 8/155°C/315 bar.	<input type="checkbox"/>
High-pressure hose, 20 m, ID 8, 315 bar, 2 × EASY!Lock	30	6.110-032.0	20 m high-pressure hose (M 22 × 1.5) with kink protection. With patented rotating AVS trigger gun connector and manual coupling. Further data: DN 8/155°C/315 bar.	<input type="checkbox"/>
High-pressure hose, 30 m, ID 8, 315 bar, 2 × EASY!Lock	31	6.110-014.0	With rotary coupling, 2 × M 22 × 1.5	<input type="checkbox"/>
High-pressure hose, 15 m, ID 10, 220 bar, 2 × EASY!Lock	32	6.110-042.0	15 m high-pressure hose M 22 × 1.5) with kink protection and threaded couplings at both ends. Further data: DN 10/155°C/220 bar.	<input type="checkbox"/>
High-pressure hose, 20 m, ID 10, 220 bar, 2 × EASY!Lock	33	6.110-043.0	with union on both sides, M 22 × 1.5 with anti-kink protection. NW 10/155°C/220 bar	<input type="checkbox"/>
High-pressure hose, 25 m, ID 10, 220 bar, 2 × EASY!Lock	34	6.110-044.0		<input type="checkbox"/>
High-pressure hose, 40 m, ID 10, 220 bar, 2 × EASY!Lock	35	6.110-045.0		<input type="checkbox"/>
High-pressure hose, 15 m, ID 12, 210 bar, 2 × EASY!Lock	36	6.110-059.0	High-pressure hose for water volumes greater than 1,800 l / h. With union on both sides. 2x M 22 × 1.5 with anti-kink protection.	<input type="checkbox"/>
High-pressure hose, 40 m, ID 12, 210 bar, 2 × EASY!Lock	37	6.110-060.0		<input type="checkbox"/>
Longlife 400 with unions on both sides				
High-pressure hose Longlife, 1,5 m, ID 8, 400 bar, 2 × EASY!Lock	38	6.110-024.0	1.5 m high-pressure hose (DN 8, M 22 × 1.5) with kink protection and connectors at both ends. For connecting to hose reels with appropriate connector (M 22 × 1.5).	<input type="checkbox"/>
High-pressure hose Longlife, 1,5 m, ID 8, 400 bar, 1 × EASY!Lock / 1 × M22 × 1.5	39	6.110-069.0	High-pressure hose (ID 8) with double steel reinforcement, 1,5 m long, suitable for up to 400 bar pressure. Connectors: M 22 × 1.5, quick and convenient EASY!Lock hand screw connection.	<input type="checkbox"/>
High-pressure hose Longlife, 10 m, ID 8, 400 bar, 2 × EASY!Lock	40	6.110-038.0	Durable, 10 m long high-pressure hose (ID 8) with double steel reinforcement and EASY!Lock hand screw connection at both ends and ANTI!Twist. Approved for 400 bar pressure.	<input type="checkbox"/>
High-pressure hose Longlife, 30 m, ID 8, 400 bar, 2 × EASY!Lock	41	6.110-023.0	With rotary coupling, 2 × M 22 × 1.5	<input type="checkbox"/>
High-pressure hose Longlife, 20 m, ID 8, 400 bar, 2 × EASY!Lock	42	6.110-027.0	with rotary coupling, 2 × M 22 × 1.5	<input type="checkbox"/>

☐ Available accessories.



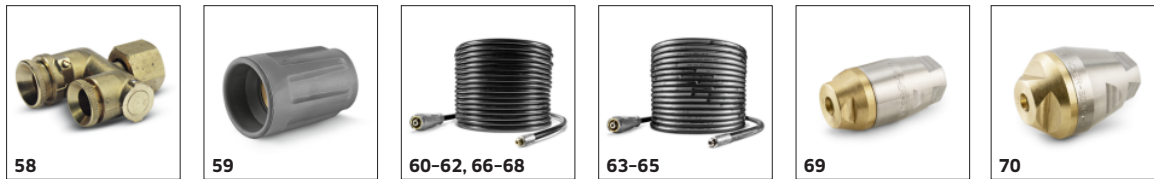
## EQUIPMENT FOR HD 4/11 C BP 1.520-928.0



		Order no.	Description	
<b>HIGH-PRESSURE HOSES</b>				
<b>Longlife 400 with unions on both sides</b>				
High-pressure hose Longlife, 15 m, ID 8, 400 bar, 2 × EASY!Lock	43	6.110-029.0	With rotary coupling, 2 × M 22 × 1.5	<input type="checkbox"/>
<b>Food industry version with unions on both sides</b>				
High-pressure hose food grade, 15 m, ID 6, 250 bar, 2 × EASY!Lock	44	6.110-063.0	15 m high-pressure hose (DN 6) with patented (rotating) AVS trigger gun connector. Non-discolouring outer layer for use in the food industry. DN 6/155°C/250 bar.	<input type="checkbox"/>
High-pressure hose food grade, 10 m, ID 8, 250 bar, 2 × EASY!Lock	45	6.110-051.0	10 m high-pressure hose (DN 8) with patented (rotating) AVS trigger gun connector. Non-discolouring outer layer for use in the food industry. M 22 × 1.5 with anti-kink sleeve.	<input type="checkbox"/>
High-pressure hose food grade, 20 m, ID 8, 250 bar, 2 × EASY!Lock	46	6.110-052.0	20 m high-pressure hose (DN 8) with swivel coupling. Non-discolouring outer layer for use in the food industry. Connectors at both ends, M 22 × 1.5, with kink protection. NW 8/155°C/250 bar.	<input type="checkbox"/>
<b>Longlife food industry version with unions on both sides</b>				
High-pressure hose food grade Longlife, 10 m, ID 8, 400 bar, 2 × EASY!Lock	47	6.110-053.0	With blue, non-marking and animal fat resistant outer covering: durable high-pressure hose (ID 8), 10 m long, ANTI!Twist and EASY!Lock hand screw connection at both ends.	<input type="checkbox"/>
High-pressure hose food grade Longlife, 20 m, ID 8, 400 bar, 2 × EASY!Lock	48	6.110-054.0	Longlife HP hose for use in the food industry. Außendecke## animal-grease-resistant, non-colour-bleeding material. With patented AVS connection in the pistol (pivot mounted)	<input type="checkbox"/>
<b>BATTERIES</b>				
Battery Power+ 36/75	49	2.445-043.0	A capacity of 7.5 Ah guarantees long runtimes for the Battery Power+ 36 V lithium-ion battery. Very powerful, with Real Time Technology via LCD display and protection against overcurrent.	<input type="checkbox"/>
Battery Power+ 36/60	50	2.042-022.0	Extremely powerful Battery Power+ 36 V lithium-ion battery with a capacity of 6.0 Ah for a long runtime. With innovative Real Time Technology via LCD display and voltage monitoring.	<input type="checkbox"/>
<b>KÄRCHER POWER NOZZLE</b>				
<b>Power nozzle spray angle 15°</b>				
Power nozzle 15°, 028	51	2.113-041.0	Fan jet nozzle with 15° spray angle suitable for stubborn dirt.	<input type="checkbox"/>
<b>ECO!BOOSTER</b>				
eco!Booster TR 030	52	2.113-084.0	eco!Booster for cold and hot water high-pressure cleaners (nozzle size 030) with 50% more area performance than the Kärcher power nozzle; ideal for delicate surfaces.	<input type="checkbox"/>
<b>QUICK CONNECT</b>				
Quick-fitting pipe union coupler trapezo	53	2.115-000.0	For fast changes between different spray lances/accessories. Perfect for Kärcher spray unit, suitable for trigger gun/spray lance interface. With M 22 × 1.5 internal thread.	<input type="checkbox"/>
Quick-fitting pipe union plug nipple tra	54	2.115-001.0	Hardened stainless steel male coupling for quick coupling 2.115-000. With M 22 × 1.5 external thread.	<input type="checkbox"/>
<b>DRUM AND TANK CLEANING</b>				
Add-on kit mud sucker	55	2.641-798.0		<input type="checkbox"/>
<b>OTHER HP ACCESSORIES</b>				
Jet gun	56	2.869-067.0	Short set-up time, easy transport, instant switch off - the jet gun is the affordable cleaning method for all kinds of small to medium-sized areas. Adjustable pressure/water volume.	<input type="checkbox"/>

☐ Available accessories.

## EQUIPMENT FOR HD 4/11 C BP 1.520-928.0



		Order no.	Description	
<b>DICHTUNGEN FÜR TR-GEWINDE</b>				
Spare part set seals TR	57	2.880-001.0		<input type="checkbox"/>
<b>STEAM NOZZLE / NOZZLE PROTECTOR / ROLLOVER NOZZLE</b>				
<b>Rollover nozzle holder</b>				
Ball Nozzle Holder	58	4.764-012.0	Rollover nozzle holder for contactless changeover from pencil jet to fan jet as well as low-pressure detergent injection via knurled nut. Without nozzle insert. (Additional type-specific power nozzle).	<input type="checkbox"/>
<b>NOZZLE UNION / SPACER</b>				
<b>Nozzle union</b>				
Nozzle screws	59	4.112-011.0	Nozzle screws with protectors for high-pressure and power nozzles	<input type="checkbox"/>
<b>PIPE CLEANING</b>				
<b>Pipe cleaning hose, ID 6</b>				
Hose assembly TR pipe cleaning DN6 14MPa	60	6.110-108.0		<input type="checkbox"/>
	61	6.110-109.0		<input type="checkbox"/>
	62	6.110-110.0		<input type="checkbox"/>
Hose assembly TR pipe cleaning DN6 max.2	63	6.110-046.0	The 10 m pipe cleaning hose is a highly flexible high pressure hose for pipe interior cleaning (threaded connection for nozzle R 1/8).	<input type="checkbox"/>
Pipe cleaning hose, DN 6, 20 m, 220 bar	64	6.110-008.0	20 m flexible high-pressure hose (DN 6) for cleaning pipes up to 220 bar (threaded connection for R 1/8 nozzle).	<input type="checkbox"/>
Hose assembly TR pipe cleaning DN6 max.2	65	6.110-047.0	The 30 m pipe cleaning hose is a highly flexible high pressure hose for pipe interior cleaning (threaded connection for nozzle R 1/8).	<input type="checkbox"/>
Hose assembly TR pipe cleaning DN6 14MPa	66	6.110-048.0	10 m flexible high-pressure hose (DN 6) for cleaning pipes (threaded connection for R 1/8 nozzle).	<input type="checkbox"/>
Pipe cleaning hose	67	6.110-049.0	20 m flexible high-pressure hose (DN 6) for cleaning pipes (threaded connection for R 1/8 nozzle).	<input type="checkbox"/>
Pipe cleaning hose, DN 6, 30 m	68	6.110-050.0	30 m flexible high-pressure hose (DN 6) for cleaning pipes (threaded connection for R 1/8 nozzle).	<input type="checkbox"/>
<b>Pipe cleaning nozzle</b>				
Dirt blaster pipe cleaning D21/040	69	4.765-001.0	The forward-tilted rotating pencil jet removes the most stubborn dirt. The three backwards-tilted jets ensure the necessary forward movement, as well as convenient handling.	<input type="checkbox"/>
Dirt blaster pipe cleaning D30/040	70	4.765-004.0		<input type="checkbox"/>

☐ Available accessories.

## EQUIPMENT FOR HD 4/11 C BP 1.520-928.0



		Order no.	Description	
<b>FLOOR AND HARD SURFACE CLEANER</b>				
<b>Hard surface cleaner FR Classic</b>				
FR Classic surface cleaner	71	2.111-016.0	The ideal entry-level model in the Kärcher surface cleaner range for cleaning surfaces indoors and outdoors. With splash guard and up to 150 bar working pressure.	<input type="checkbox"/>
<b>Hard surface cleaner FR 30</b>				
FR 30 Surface Cleaner	72	2.111-011.0	Up to 10 times greater area coverage compared with the conventional high pressure jet.	<input type="checkbox"/>
<b>Hard surface cleaner FR 30 ME</b>				
FR 30 ME surface cleaner	73	2.111-013.0	Hot water resistant stainless steel surface cleaner with double ceramic bearings, non-marking swivel castors and suction hose connection. Ideal for indoor cleaning, e.g. food industry.	<input type="checkbox"/>
<b>Machine-specific nozzle kit for FR</b>				
Nozzle kit for FR, 400 l/h - 450 l/h	74	2.641-457.0	Machine-specific nozzle kit comprising power nozzles and screw connections. For the optimal performance of Kärcher surface cleaners (400-450 l/h).	<input type="checkbox"/>
Nozzle kit for FR, 450 l/h - 500 l/h	75	2.640-482.0	Nozzle kit includes power nozzles and unions. For Kärcher surface cleaners (450 to 500 l/h).	<input type="checkbox"/>
<b>Machine-specific nozzle kits for FR Classic</b>				
Nozzle kit for FR Classic, 028	76	2.885-436.0		<input type="checkbox"/>
<b>FOAM SYSTEMS</b>				
<b>Cup foam lance</b>				
Cup foam lance Advanced 1, 400 l/h - 600 l/h	77	4.112-063.0		<input type="checkbox"/>
Cup foam lance DUO Advanced 1, 400 l/h - 600 l/h	78	4.112-067.0		<input type="checkbox"/>
Cup foam lance Basic 1, 350 l/h - 600 l/h	79	4.112-053.0	For high-pressure cleaners with a flow rate of 350-600 l/h: new, robust and very high-quality foam cup lance with outstanding foam quality while consuming half as much cleaning agent.	<input type="checkbox"/>
1-litre cleaning agent container for cup foam lance basic	80	5.071-414.0		<input type="checkbox"/>
1-litre cleaning agent container for cup foam lance advanced	81	6.414-050.0	Additional 1-litre cleaning agent container for quick replacement of the cleaning agent (for foam lance 2.112-017.0 and 2.112-018.0).	<input type="checkbox"/>
<b>Inno Foam Set</b>				
Inno foam kit with detergent injector	82	2.112-000.0	High-pressure foam system with double lance (foam nozzle and high-pressure jet for rinsing). For use with mobile and stationary high-pressure and HDS pressure cleaners for cleaning or disinfection.	<input type="checkbox"/>
<b>Easy Foam Set</b>				
Easy Foam Set with RM injector	83	2.112-010.0	HP foam system for use with. HD/HDS units for cleaning and disinfecting. Foam nozzle for connection to lance and HP chemical injector with precision 0-5% metering valve. The machine specific nozzle kit has to be ordered separately.	<input type="checkbox"/>
<b>Nozzle kits for Inno/Easy Foam Set</b>				
Nozzle kit 055 z. Inno/Easy Set 500 - 600 l/h	84	2.111-009.0	Optimal adaptation to different machine outputs for economic use.	<input type="checkbox"/>

☐ Available accessories.



## EQUIPMENT FOR HD 4/11 C BP 1.520-928.0



		Order no.	Description	
<b>FOAM SYSTEMS</b>				
<b>Foam nozzle mounting kit</b>				
Foam nozzle kit	85	2.112-013.0	Foaming agent kit. The foam nozzle is ideal for use in sanitary areas and the food industry and wherever long application times are necessary.	<input type="checkbox"/>
<b>COUPLING PARTS</b>				
<b>Rotary coupling</b>				
Rotary coupling	86	4.111-021.0	Kärcher rotary coupling prevents twisting and kinking of high-pressure hoses for ease of use. Connector Easy!Lock. With grip protection.	<input type="checkbox"/>
<b>Connector</b>				
Nozzle connector/screw connector	87	4.111-022.0	Nozzle connector/screw connector for connecting high-pressure nozzles and accessories to the high-pressure trigger gun (with nozzle connector). Connectors: 1x M 22 × 1.5 and 1x M 18 × 1.5.	<input type="checkbox"/>
Y distributor	88	4.111-024.0	Offers the option to connect two spray units to the machine. Installation on the high pressure outlet.	<input type="checkbox"/>
Short spray unit	89	4.111-038.0	For attaching high-pressure nozzles and accessory parts to HP trigger gun (with nozzle screws). Not compatible with triple nozzles.	<input type="checkbox"/>
<b>Adapter EASY!Lock</b>				
Adapter 1 M22AG-TR22AG	90	4.111-029.0	Adapter 1 to connect the old hose with the new hose	<input type="checkbox"/>
Adapter 2 M22IG-TR22AG	91	4.111-030.0	Adapter 2 to connect the old device with the new hose and the old gun with the new hose	<input type="checkbox"/>
Adapter 3 M22IG-TR22AG	92	4.111-031.0	Adapter 3 to connect the old gun with the new spray lance and new servo regulator	<input type="checkbox"/>
Adapter M22 - Swivel	93	4.111-032.0	M22 × 1,5female and swivel connection. For extension of high-pressure hoses with AVS connection or for usage of the telescopic lance with a high-pressure hose with AVS connection.	<input type="checkbox"/>
Adapter 5 TR22IG-M22AG	94	4.111-033.0	Adapter 5 to connect the new gun with the old spray lance and new servo regulator with the old spray lance	<input type="checkbox"/>
Adapter 6 TR22IG-M22AG	95	4.111-034.0	Adapter 6 to connect the new device with the old hose and the old hose with the new gun	<input type="checkbox"/>
Adapter 7 M18IG-TR20AG	96	4.111-035.0	Adapter 7 to connect the old spray lance with the new nozzle	<input type="checkbox"/>
Adapter 8 TR20IG-M18AG	97	4.111-036.0	Adapter 8 to connect the new spray lance with the old nozzle	<input type="checkbox"/>
Coupler -2xM22x1,5	98	4.111-037.0	Brass double connector for connecting and extending high-pressure hoses. With rubber protection. Connector: 2x M 22 × 1.5 m.	<input type="checkbox"/>

☐ Available accessories.

## EQUIPMENT FOR HD 4/11 C BP 1.520-928.0



		Order no.	Description	
<b>COUPLING PARTS</b>				
<b>Adapter EASY!Lock</b>				
ADAPTER for replacement TR22IG-M22AG Er	99	4.111-046.0	Rotatable adapter for connecting EASY!Force high-pressure gun and high-pressure hoses with M 22x1.5 connection	<input type="checkbox"/>
<b>HOSE REELS</b>				
<b>Automatic, self-winding hose reels</b>				
Automatic plastic hose reel incl. high-pressure hose, 15 m	100	2.639-257.0		<input type="checkbox"/>
Automatic hose reel, powder-coated steel / plastic, 20 m	101	6.392-074.0	Automatic hose reel for 20 m high-pressure hose. The console is made from powder-coated steel, the drum is made from plastic.	<input type="checkbox"/>
Automatic stainless steel / synthetic material hose drum, 20 m	102	6.392-083.0	Automatic hose reel for 20 m high-pressure hose. The console consists of stainless steel, the drum is made from plastic.	<input type="checkbox"/>
Automatic hose reel, coated, 20 m	103	6.392-106.0	Automatic hose reel of durable plastic. Painted steel bracket. Suitable for 20 m high-pressure hose.	<input type="checkbox"/>
Hose reel, automatic, basalt grey-coated, 20 m	104	6.392-105.0	Automatic hose reels provide the highest level of safety and convenience for winding and unwinding HP hoses.	<input type="checkbox"/>
Automatic hose reel, stainless steel, includes swivel holder, 20 m	105	6.392-076.0	Automatic stainless steel hose reel. With swivel holder. Suitable for 20 m high-pressure hose.	<input type="checkbox"/>
Automatic stainless steel hose reel, 40 m	106	6.392-442.0	Automatic hose reels provide the highest level of safety and convenience for winding and unwinding HP hoses. Compatible high-pressure hose, e.g. order no. 6.110-076.0 (ID 8, 40 m, 400 bar, 1x hose reel connection attachment kit).	<input type="checkbox"/>
Powder-coated swivel holder	107	2.639-931.0	Swivel holder for automatic hose reel wall mounting. For maximum action radius and flexibility of high-pressure hose. Rotatable 120°. Galvanised steel.	<input type="checkbox"/>
Stainless steel swivel holder	108	2.641-867.0	Swivelling wall bracket made of high-grade steel (for 2.641-866). This makes maximum flexibility and convenience possible when working with the HP hose.	<input type="checkbox"/>
<b>FACADE AND SOLAR PANEL CLEANING</b>				
<b>Brushes</b>				
Drive for roller brush 500	109	4.762-584.0	Hydraulic drive for rotating roller brushes. For cleaning façades or solar power installations with our professional high-pressure cleaners. Installation on spray lance or telescopic lance.	<input type="checkbox"/>
Splash guard for roller brush 500	110	4.762-621.0	Splash guard with velcro fastening for rotating roller brush. Clear view of the brush thanks to transparent film, with protection against splashes at the same time.	<input type="checkbox"/>
Roller brush 500 soft	111	4.762-623.0	Soft brush attachment for use with hydraulic drive (4.762-584.0). Ideal for glass and solar power installation cleaning. Easy quick-change system and secure mounting on drive.	<input type="checkbox"/>
Roller brush 500 medium	112	4.762-624.0	Medium-hard brush attachment for use with hydraulic drive (4.762-584.0). Suitable for sensitive façades, foils and fabrics. Easy and safe quick-change system.	<input type="checkbox"/>

☐ Available accessories.

## EQUIPMENT FOR HD 4/11 C BP 1.520-928.0



		Order no.	Description	
<b>FACADE AND SOLAR PANEL CLEANING</b>				
<b>Brushes</b>				
Roller brush 500 hard	113	4.762-625.0	Hard brush attachment for use with hydraulic drive (4.762-584.0). For rough façades, stone and wooden patios. Safe and easy quick-change system.	<input type="checkbox"/>
Brush hard	114	6.960-133.0	Brush with hard bristles for cleaning industry facades and floor coverings and removing coarse dirt. Simple installation on telescopic lances or high-pressure lances from Kärcher.	<input type="checkbox"/>
Brush medium	115	6.960-134.0	Optimally cleans facades, roller shutters and textile fabrics: the brush with medium-hard bristles for fast and simple attachment to telescopic lances or high-pressure lances from Kärcher.	<input type="checkbox"/>
Brush soft	116	6.960-135.0	For simple installation on telescopic lances or high-pressure lances from Kärcher: brush with soft bristles for deep cleaning of sensitive surfaces such as glass or solar systems.	<input type="checkbox"/>
<b>Telescopic</b>				
TL low pressure adapter	117	4.580-097.0	TL low-pressure adapter comprising ball valve for tool-free installation on telescopic lances. Ideal for applications with rotating high-pressure brushes.	<input type="checkbox"/>
Telescopic lance TL 7 F	118	4.762-609.0	Telescopic lance TL 7 F with up to 7 m reach made from robust and lightweight glass fibre. With practical quick-release fasteners for simple retraction and extension.	<input type="checkbox"/>
Telescopic lance TL 7 H	119	4.762-610.0	Multifunctional hybrid telescopic lance TL 7 H made of rigid and lightweight carbon-glass fibre mix. Telescopic thanks to quick-release fastenings. Up to 7 m reach.	<input type="checkbox"/>
Telescopic lance TL 10 H	120	4.762-611.0	Up to 10 m reach: hybrid telescopic lance TL 10 H. Comprising carbon-glass fibre mix and suitable for multifunctional use. Simple retraction and extension thanks to quick-release fasteners.	<input type="checkbox"/>
Telescopic lance TL 10 C	121	4.762-612.0	Carbon fibre telescopic lance TL 10 C. With up to 10 m reach and practical quick-release fasteners. Multifunctional use for cleaning facades, windows or solar panels.	<input type="checkbox"/>
Telescopic lance TL 14 C	122	4.762-613.0	Maximum rigidity with minimum weight: telescopic lance TL 14 C made from carbon fibre. Enormous reach of 14 m, multifunctional use and easy to use thanks to quick-release fasteners.	<input type="checkbox"/>
TL high pressure adapter	123	4.775-154.0	TL high-pressure adapter, flexible high-pressure gun for high-pressure cleaning with telescopic lances. Ergonomic, easy to install, suitable for right- and left-handed individuals.	<input type="checkbox"/>
<b>WET BLASTING ATTACHMENT</b>				
<b>Wet blasting attachment (without nozzle)</b>				
Wet blasting attachment with flow control (without nozzles)	124	4.115-000.0	Paint, rust and scale removal made easy: Kärcher wet blasting attachment with flow control for adding blasting abrasive to the high-pressure jet.	<input type="checkbox"/>
Wet blasting attachment without flow control (nozzles not included)	125	4.115-006.0	Paint, rust and scale removal made easy: Kärcher wet blasting attachment with flow control for adding blasting abrasive to the high-pressure jet. Without flow control.	<input type="checkbox"/>
<b>Nozzle pack for wet blasting attachment</b>				
Nozzle pack TR wet jet set 0035	126	2.112-021.0	Nozzle kit with wet blasting nozzle and nozzle insert (type specific). For optimal Kärcher wet blasting attachment performance. Only in combination with wet blasting attachment 4.115-000.0   4.115-006.0.	<input type="checkbox"/>

☐ Available accessories.

## EQUIPMENT FOR HD 4/11 C BP

### 1.520-928.0



		Order no.	Description	
<b>WET BLASTING ATTACHMENT</b>				
<b>Boron carbide nozzle</b>				
Boron carbide nozzle, for machines as of 1000 l/h	127	6.415-084.0	In addition to nozzle packs. Very wear-resistant nozzle with boron carbide chuck for continuous-duty operation.	<input type="checkbox"/>
<b>WATER CONNECTION</b>				
<b>Geka coupling</b>				
With hose nozzle, R 1/2"	128	6.388-461.0	with hose liner	<input type="checkbox"/>
With hose nozzle, R 3/4"	129	6.388-455.0		<input type="checkbox"/>
With hose nozzle, R 1"	130	6.388-465.0	with hose barb	<input type="checkbox"/>
With female thread, R 3/4"	131	6.388-473.0	with female thread	<input type="checkbox"/>
<b>Suction filter</b>				
Water filter	132	6.414-956.0	Suitable for ponds, storage tanks or similar, polyamide filter casing, stainless steel strainer, 800 µm mesh, R 3/4" and R 1" connection, without non-return valve	<input type="checkbox"/>
Suction filter with check valve	133	4.730-012.0	Brass suction filter suitable for ponds, storage tanks, etc. With check valve.	<input type="checkbox"/>
<b>Fine-mesh water filter</b>				
Add-on kit water filter universal	134	2.637-020.0		<input type="checkbox"/>
Fine-mesh water filter with adapter	135	4.730-102.0	Fine-mesh water filter, 125 µm, max. temperature 50°C. Protects the high-pressure cleaner from dirt particles contained in the water. Water flow rate up to 1200 l/h. Connection 3/4", with adapter, 1".	<input type="checkbox"/>
<b>Water supply hose</b>				
Water supply hose	136	4.440-038.0	NW 13 R1" / R 3/4", up to 30 °C	<input type="checkbox"/>
	137	4.440-207.0	NW 19 R1" / R 3/4", up to 85 °C, for pick-up	<input type="checkbox"/>
<b>WASHING BRUSHES</b>				
<b>Push-on washing brush</b>				
Push-on wash brush, M 18 × 1.5	138	4.113-001.0	Push-on wash brush for universal use. Simply push on to lance. Connector: M 18 × 1.6.	<input type="checkbox"/>
Push-on washing brush	139	4.762-497.0	With clamp for mounting directly to units' double or triple nozzle. Fits on new double and triple nozzles.	<input type="checkbox"/>
<b>Rotating washing brush</b>				
Rotating wash brush for < 800 l/h machines, nylon bristles	140	4.113-004.0	The rotating wash brush gently removes fine dust and traffic film from all surfaces. Temperature resistant up to 60°C. (M 18 × 1.5, replaceable brush insert).	<input type="checkbox"/>

☐ Available accessories.

EQUIPMENT FOR HD 4/11 C BP  
1.520-928.0



		Order no.	Description	
WASHING BRUSHES				
Rotating washing brush				
Rotating wash brush for < 800 l/h machines, natural bristles	141	4.113-003.0	Driven by water stream. Gently removes fine dust and traffic film from any surface. Temperature resistant up to 60°C, M 18 × 1.5 (replaceable brush insert).	<input type="checkbox"/>

☐ Available accessories.